

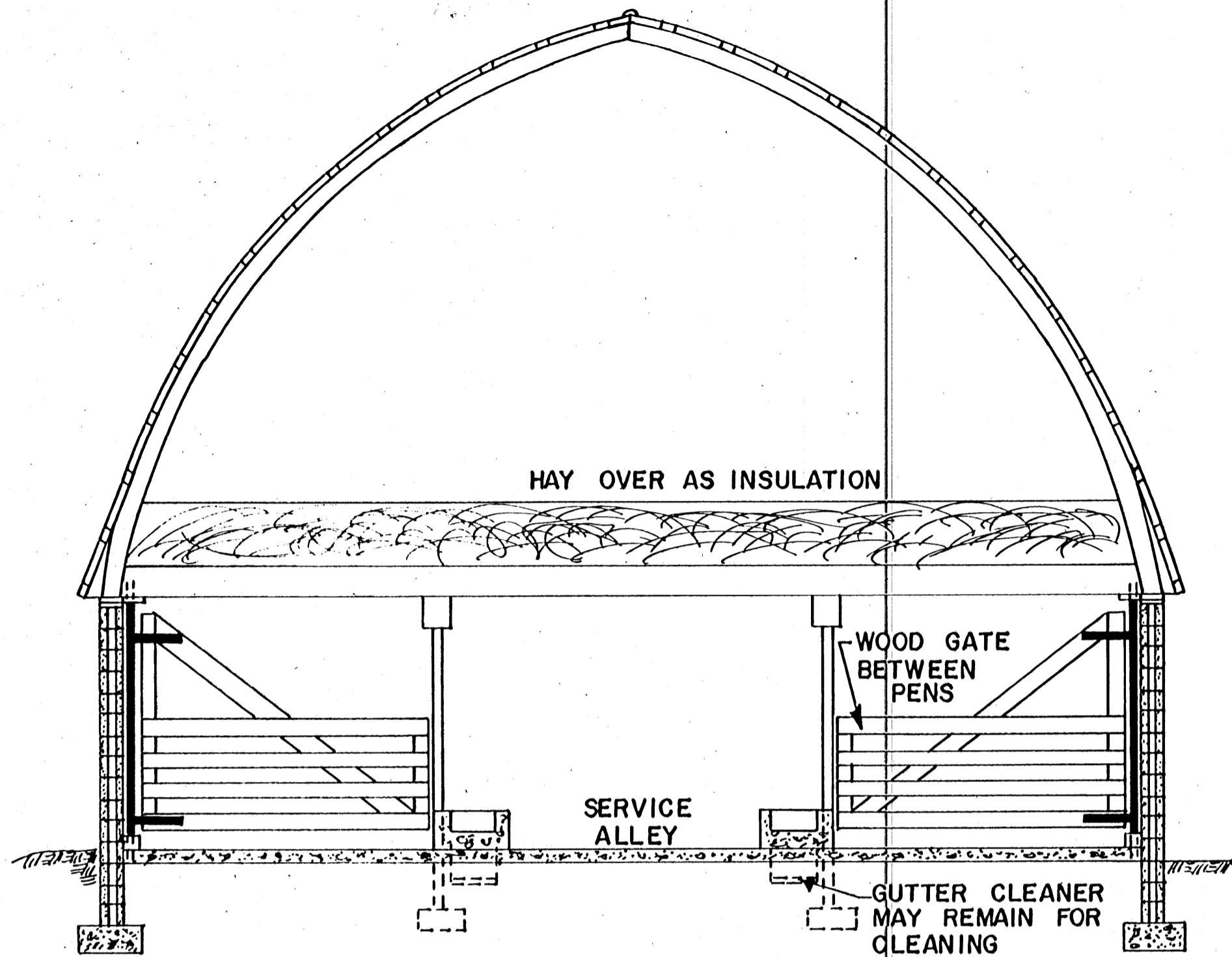
PLAN

COOPERATIVE EXTENSION WORK IN
 AGRICULTURE AND HOME ECONOMICS
 STATE OF MISSISSIPPI
 MISSISSIPPI STATE UNIVERSITY
 AND
 UNITED STATES DEPARTMENT OF AGRICULTURE COOPERATING

**MATERNITY BARN
 FOR DAIRY COWS**

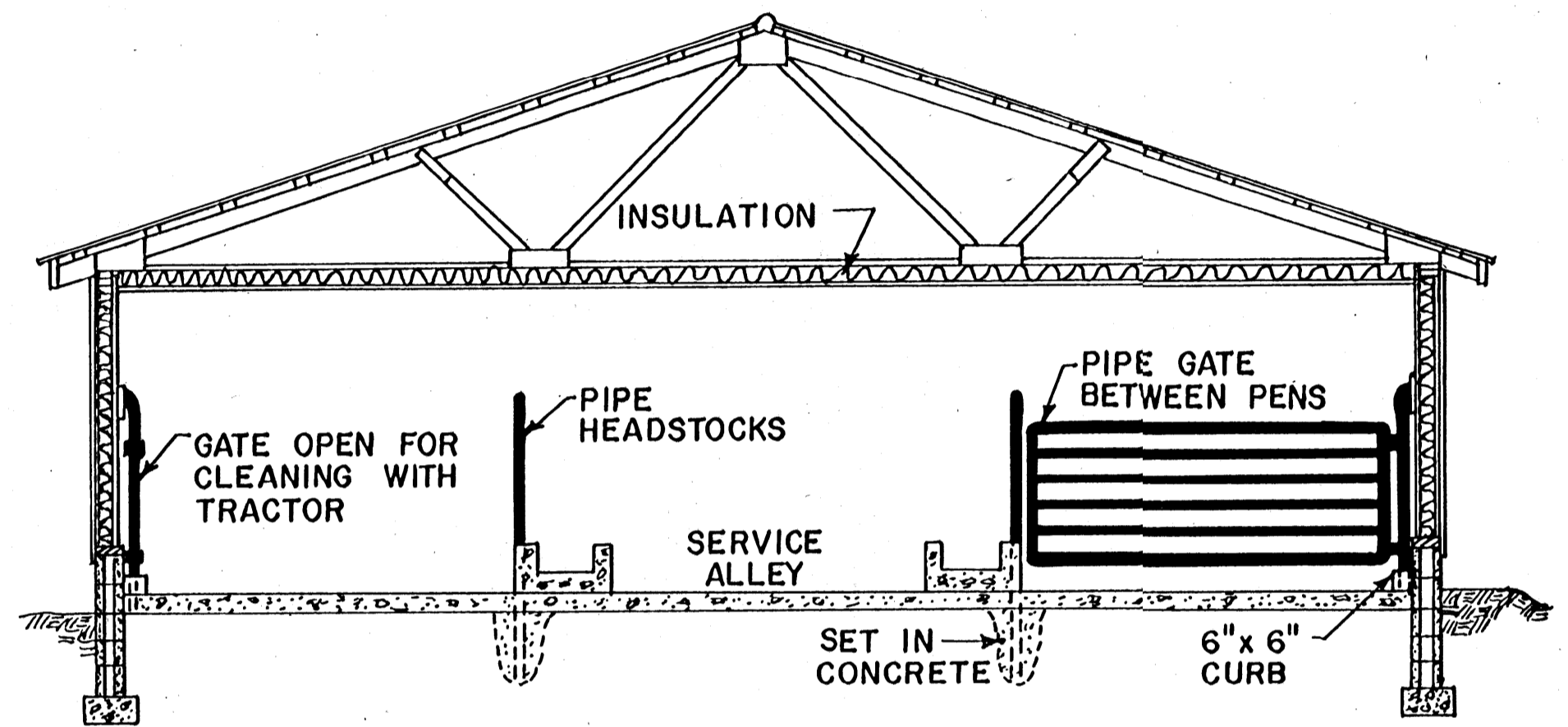
PA.	'72	6146	SHEET 1 OF 2
-----	-----	-------------	--------------

BASED ON: PENN. STATE UNIV.
 PLAN 723-218



**TWO STORY REMODELED STALL
DAIRY BARN**

1. CONCRETE WALLS ARE POOR INSULATION. KEEP TEMPERATURES LOW OR ADD INSULATION.
2. VENTILATE WITH EXHAUST FANS.
3. PROVIDE AIR INLET SLOT.
4. PROVIDE END DOORS FOR TRACTOR CLEANING. USE GUTTER CLEANER FOR SEMI-MANUAL CLEANING.
5. GATES AND HEADSTOCKS MAY BE WOOD OR STEEL.



ONE STORY INSULATED BARN

1. INSULATE: 3 1/2" IN WALLS, UP TO 6" IN CEILING.
2. VENTILATE WITH EXHAUST FANS WITH OR WITHOUT AUXILIARY HEAT.
3. INLETS MAY BE CEILING SLOTS OR PLASTIC TUBE POWER INLETS.
4. HEAT WILL BE NEEDED FOR TEMPERATURES ABOVE 50°F IN WINTER.
5. BARN MAY BE KEPT COLD WITH NO INSULATION. USE OPEN EAVES AND RIDGE VENT, 4 IN 12 SLOPE.

COOPERATIVE EXTENSION WORK IN AGRICULTURE AND HOME ECONOMICS		
STATE OF MISSISSIPPI		
MISSISSIPPI STATE UNIVERSITY		
AND UNITED STATES DEPARTMENT OF AGRICULTURE COOPERATING		
MATERNITY BARN FOR DAIRY COWS		
PA.	'72	6146
		SHEET 2 OF 2