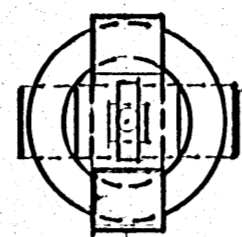
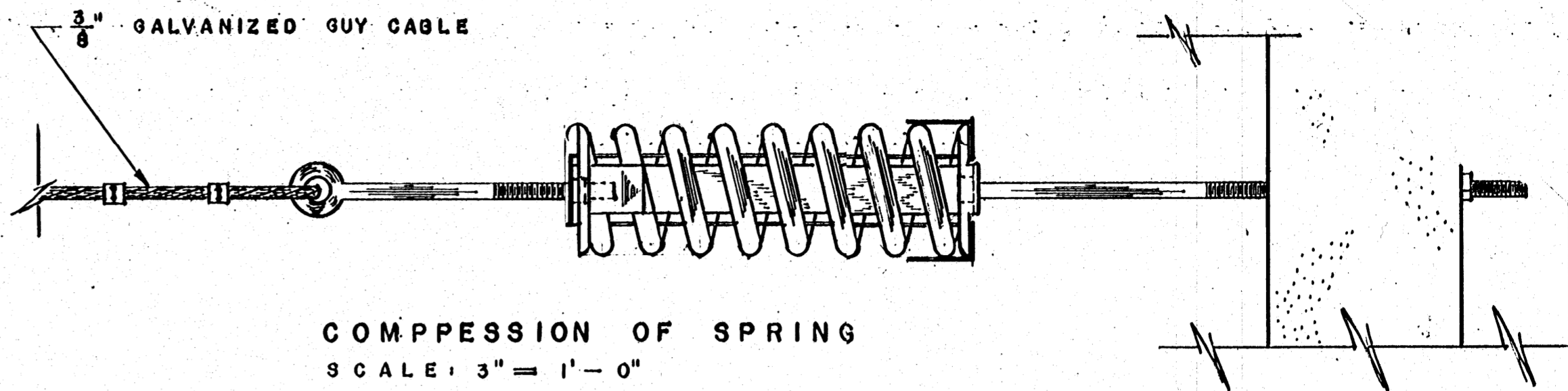


SHACKLE & SPRING
SCALE: 3" = 1'-0"



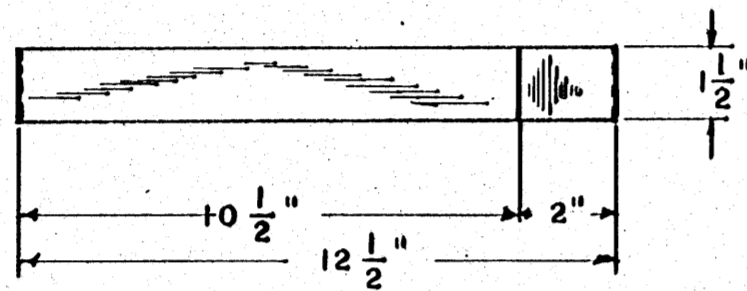
END VIEW
SCALE: 3" = 1'-0"



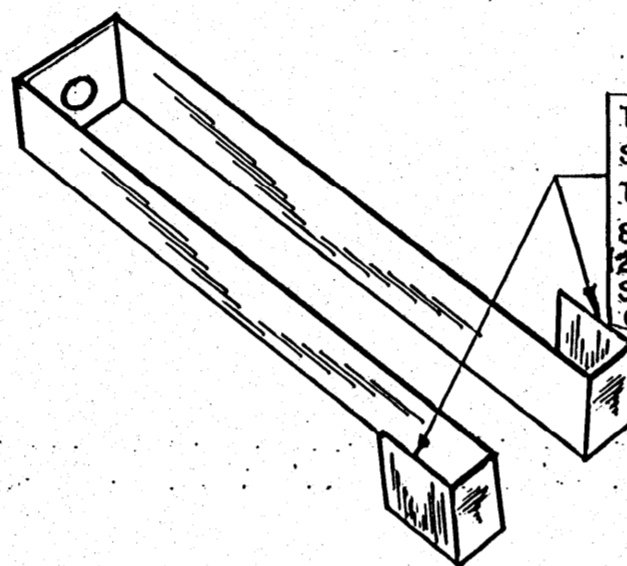
COMPRESSION OF SPRING
SCALE: 3" = 1'-0"

NOTE:
SHACKLES SHOULD NOT BE
MADE TILL AFTER SPRINGS
ARE SECURED

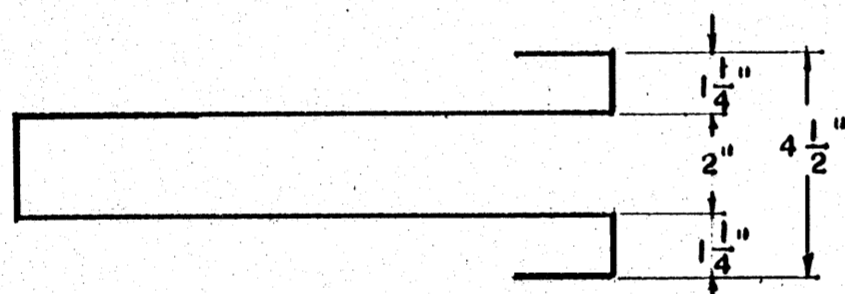
NOTE:
1/2" GALVANIZED EYE BOLTS
FOR USE ON END POSTS



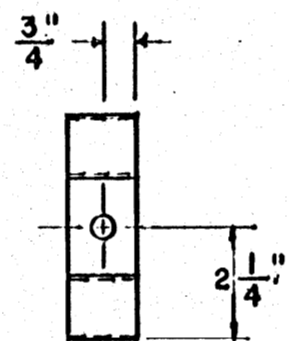
TOP VIEW
SCALE: 3" = 1'-0"



THE LEG OF SHACKLE
SHOULD BE LONG ENOUGH
TO COMPENSATE FOR THE
SHAPE OF THE SPRING
(2 SHACKLES REQUIRED PER SPRING)
SECOND SHACKLE MUST BE FORMED
OVER SPRING END AFTER
INSTALLATION OF THE FIRST
SHACKLE



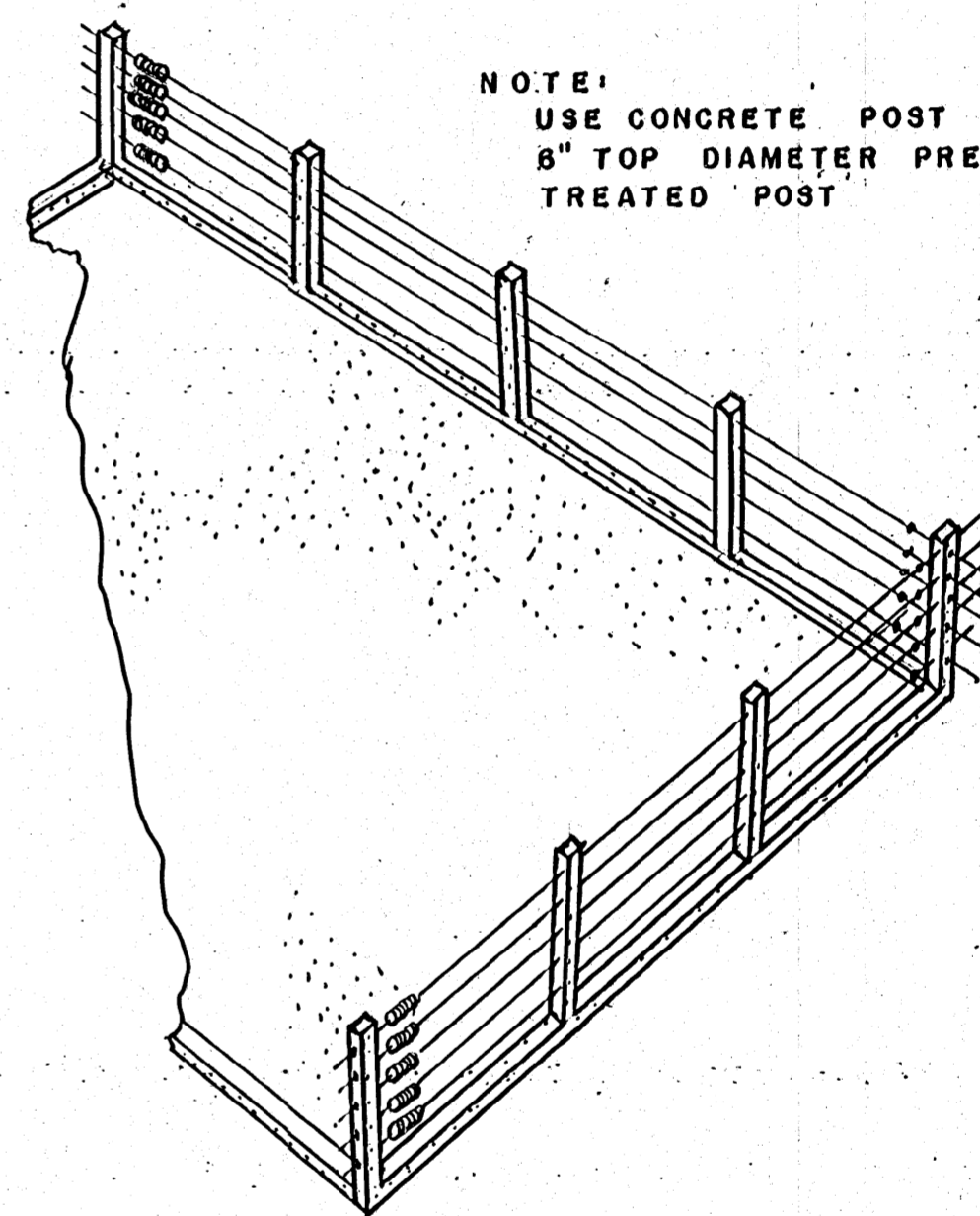
FRONT VIEW
SCALE: 3" = 1'-0"



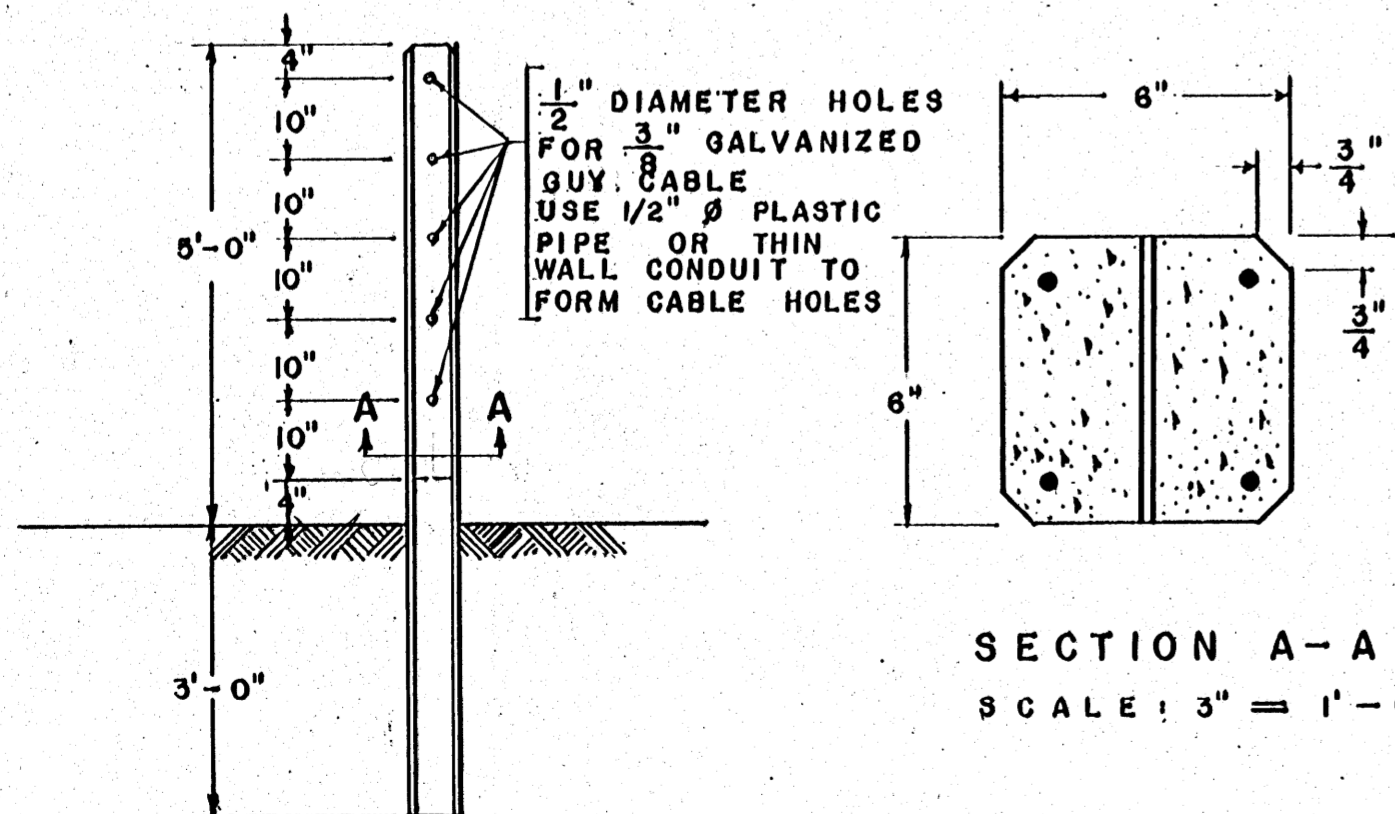
END VIEW
SCALE: 1' = 0"

SHACKLE

NOTE:
OUTSIDE DIAMETER OF
AUTOMOBILE SPRING FROM
SALVAGE SHOULD BE A
MINIMUM OF 4"



PERSPECTIVE



SECTION A-A
SCALE: 3" = 1'-0"

NOTE:
4 NO. 3 (3/8") PLACED IN THE
CORNERS AND COVERED WITH
A MINIMUM OF 3/4" OF
CONCRETE AT ALL POINTS.

THE LARGEST SIZE AGGREGATE
SHOULD BE 1/2"

BEVEL CORNERS BY PLACING
1/2" TRIANGULAR STRIP
IN FORM

CONCRETE POST
SCALE: 1/2" = 1'-0"

CABLE FENCING		
COOPERATIVE EXTENSION SERVICE STATE OF MISSISSIPPI MISSISSIPPI STATE UNIVERSITY AND UNITED STATES DEPARTMENT OF AGRICULTURE COOPERATING		
DRAWN BY: R.F.W.	CHECKED BY: L.M.	
DATE: JAN. '71	DWG. NO. 5961-A	SHT. 1 OF 1