

# Tate County 4-H Livestock News

Senatobia, MS



AUGUST 2009

## 2009-2010 4-H/FFA Livestock Show Deadlines

	MS State Fair			District Shows & Dixie National Jr. Round-Up		
	Ownership	Entry	Classification & Retinal Imaging	Ownership	Entry	Classification & Retinal Imaging
Commercial Beef Heifers	Sept 1 <sup>st</sup>	Sept 3 <sup>rd</sup>	Sept 14 <sup>th</sup> – 18 <sup>th</sup>	Sept 1 <sup>st</sup>	Sept 3 <sup>rd</sup>	Sept 14 <sup>th</sup> 2:00-5:00 P.M.
Market Steers	Sept 1 <sup>st</sup>	Sept 3 <sup>rd</sup>	Sept 14 <sup>th</sup> – 18 <sup>th</sup>	Sept 1 <sup>st</sup>	Sept 3 <sup>rd</sup>	Sept 14 <sup>th</sup> 2:00-5:00 P.M.
Market Lambs	Sept 1 <sup>st</sup>	Sept 3 <sup>rd</sup>	Sept 14 <sup>th</sup> – 18 <sup>th</sup>	Sept 1 <sup>st</sup>	Sept 3 <sup>rd</sup>	Sept 14 <sup>th</sup> 2:00-5:00 P.M.
Market Goats	Sept 1 <sup>st</sup>	Sept 3 <sup>rd</sup>	Sept 14 <sup>th</sup> – 18 <sup>th</sup>	Sept 1 <sup>st</sup>	Sept 3 <sup>rd</sup>	Sept 14 <sup>th</sup> 2:00-5:00 P.M.
Commercial Meat Goat Does	Sept 1 <sup>st</sup>	Sept 3 <sup>rd</sup>	N/A	Sept 1 <sup>st</sup>	Sept 3 <sup>rd</sup>	N/A
Market Hogs	Sept 1 <sup>st</sup>	Sept 3 <sup>rd</sup>	N/A	Dec 1 <sup>st</sup>	Dec 3 <sup>rd</sup>	Feb 4 <sup>th</sup> – 5 <sup>th</sup>
Beef Breeding	Sept 1 <sup>st</sup>	Sept 3 <sup>rd</sup>	N/A	Dec 1 <sup>st</sup>	Dec 3 <sup>rd</sup>	N/A
Dairy Cattle	Sept 1 <sup>st</sup>	Sept 3 <sup>rd</sup>	N/A	Dec 1 <sup>st</sup>	Dec 3 <sup>rd</sup>	N/A
Dairy Goats	Sept 1 <sup>st</sup>	Sept 3 <sup>rd</sup>	N/A	Dec 1 <sup>st</sup>	Dec 3 <sup>rd</sup>	N/A

*To ensure that your entries are entered by the deadlines, we request that all species that have an above entry deadline of September 3rd be returned to our office no later than August 28th and those with a December 3rd entry deadline be returned no later than November 27th. The September 3rd and December 3rd deadlines are for our office only.*

### Livestock Show Info...

A nomination form must be completed entirely for each animal to be shown. \*\*\*All forms may be picked up at our office.\*\*\* (ALL FFA advisors must submit their entries through our office.)

Note that for market hogs, beef breeding animals, dairy cattle and dairy goats, there are separate entry forms for the State Fair and Dixie National in case the exhibitor decides to show different beef breeding animals, dairy cattle or dairy goats at these shows.

For market hogs, there is a State Fair nomination form that must be entered by August 28<sup>th</sup> and a District Livestock Shows and Dixie National Junior Round-Up nomination form that must be entered by November 27<sup>th</sup>.

For beef breeding animals, dairy cattle and dairy goats, the same animals shown at the State Fair can be shown at the Dixie National Junior Round-Up. This can be submitted on the August 28<sup>th</sup> deadline if you check to enter that animal for both the State Fair and Dixie National Junior Round-Up.

*Never approach a bull from the front, a horse from the rear, or a fool from any direction.*

*~Unknown~*



## Livestock Show Info Continued...

All market steers, commercial beef heifers, market lambs, and market goats **MUST BE** retinal imaged and classified (except market goats) to show at the 2009 Mississippi State Fair and 2010 District and Dixie National Junior Round-Up Livestock Shows during the week on September 14<sup>th</sup> from 2:00-:500pm.

Volunteer leaders who may be helping 4-H'ers groom animals must be officially certified volunteer leaders of the 4-H program in Mississippi.

The Mississippi State Fair will be here soon and the Mississippi Livestock Quality Assurance training for **NEW** exhibitors, parents or guardians, and volunteers must be completed by September 1, 2009. Please let me know if you need to have this training. We will be scheduling a training soon!



An Official Health Form with each animal identified will be required on all livestock showing at the 2009 Mississippi State Fair. This includes all market animals, beef breeding cattle, commercial beef heifers, dairy cattle (purebred and commercial dairy heifers), dairy goats and commercial meat goat does. Health Forms may be picked up in our office.

All commercial heifers and steers showing at the Mississippi State Fair and District and Dixie National Junior Round-Up Livestock Shows must be polled or dehorned with no scurs or re-growth to exceed 1½ inches above the skin line. Remember the minimum weight on commercial heifers is **500** pounds for the Mississippi State Fair. There will be **NO Traditional Steer Show** for the 2009 State Fair and the 2010 District/Dixie National Livestock Shows.



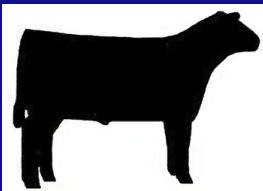
Market Goats may be shown that are polled, dehorned, or disbudded with no re-growth to exceed 1½" above the skin line. Removal of horns is not allowed on the show grounds. Remember the minimum weight of market goats is **40** pounds with no maximum weight for the Mississippi State Fair.

Commercial Meat Goat Does must weigh a minimum of **40** pounds with no maximum weight for the Mississippi State Fair.

Market Lambs must weigh a minimum of **70** pounds with no maximum weight for the Mississippi State Fair.

Market Hogs must weigh a minimum of **200** pounds with no maximum weight for the Mississippi State Fair.

Commercial Dairy Heifers must weigh a minimum of **200** pounds for the Mississippi State Fair.



## Mississippi Livestock Council Minutes

To obtain a copy of these minutes, please contact me.



## 2009 MISSISSIPPI STATE FAIR LIVESTOCK SHOW SCHEDULE

### Thursday, October 8, 2009

1:00 - 6:00 p.m.

Stall and pen assignments for early arriving lambs, steers and breeding cattle  
**(All stall and pen assignments to be made by Show Manager)**

### Friday, October 9, 2009

8:00 a.m. - 12:00 Noon

Stall and pen assignments for lambs, steers and beef breeding cattle

12:00 Noon

Deadline for arrival of junior lambs, steers and beef breeding cattle

10:00 a.m. - 5:00 p.m.

Process beef breeding entries (Livestock Office)

1:00 p.m. - 4:00 p.m.

Weigh and process market lambs and taking entries for Outstanding Shepherd Award

1:00 p.m. - 3:00 p.m.

Weigh and process steers

3:00 p.m. - 4:00 p.m.

Weigh and process commercial heifers

4:00 p.m.

Deadline for CORRECTIONS in Lamb Showmanship entries

5:00 p.m.

Deadline for CORRECTIONS in Beef Showmanship entries

5:00 p.m.

MS Simmental/Simbrah Open Show

### Saturday, October 10, 2009

7:00 - 7:30 a.m.

Check-in teams for State Senior 4-H & FFA Livestock Judging Contest - Expo Center

7:30 a.m.

State Senior 4-H & FFA Livestock Judging Contest - Expo Center

2:00 p.m.

Junior Market Lamb Show - Judging Arena - Lambs released after showing

2:00 p.m.

FFA Awards - Sales Arena

3:00 p.m.

Slick Sheared Steer Show - Barn 11; Steers released after showing

### Sunday, October 11, 2009

8:00 a.m.

Arrival of Junior and Open Market Swine

9:00 a.m.

Devotional Service - Sales Arena

10:00 a.m.

Junior Cattlemen's Assn. Meeting - Sales Arena

12:00 Noon

Deadline for arrival of Junior and Open Market Swine

1:00 p.m.

Beef Showmanship - Judging Arena

1:00 p.m. - 4:00 p.m.

Weigh and process Junior and Open Market Swine

4:00 p.m.

Deadline for CORRECTIONS in Swine Showmanship entries

### Monday, October 12, 2009

8:30 a.m.

Junior Beef Breeding Show - Judging Arena

10:00 a.m.

(Commercial Heifers followed by Registered Breeds); Cattle released after showing

1:00 p.m.

Open Market Swine Show - Swine Arena

4:00 p.m.

Junior Market Hog Show - Swine Arena

Release all swine

### Tuesday, October 13, 2009

9:00 a.m.

Stockdog Trials - Expo Center

6:00 p.m.

Stockdog Trials - Expo Center

### Wednesday, October 14, 2009

9:00 a.m.

Stockdog Trials - Expo Center

### Thursday, October 15, 2009

10:00 a.m. - 3:00 p.m.

Process dairy cattle entries

1:00 p.m.

Deadline for arrival of junior and senior dairy cattle

2:00 p.m. - 4:00 p.m.

Weigh commercial dairy heifers

4:00 p.m.

Jr. Dairy Quiz Bowl

### Friday, October 16, 2009

7:00 a.m. - 10:00 a.m.

Process dairy goat entries

7:30 a.m. - 9:30 a.m.

Weigh and process junior commercial meat goat does

9:00 a.m.

Deadline for arrival of 4-H/FFA Market Goats, Meat Goat Does and Dairy Goats

9:00 a.m.

Open Dairy Show - Judging Arena

9:30 a.m. - 11:30 a.m.

Weigh and process junior market goats

10:00 a.m.

4-H Dairy Sweetheart & 4-H Market Goat Princess Contests - Expo Center

11:30 a.m.

Deadline for CORRECTIONS in Dairy Goat Showmanship entries

1:00 p.m.

Deadline for CORRECTIONS in Goat Showmanship (Market and Meat Goat Doe) entries

1:00 p.m.

Deadline for CORRECTIONS in Dairy Cattle Showmanship entries

1:00 p.m.

4-H/FFA Dairy Goat Show - Barn 8 - Showmanship followed by Sr. Does and Jr. Does

1:30 p.m.

Jersey Futurity - Judging Arena

2:00 p.m.

Holstein Futurity - Judging Arena

Goat Showmanship (Market Goats and Commercial Meat Goat Does) - Barn 7

7:00 p.m.

4-H/FFA Commercial Meat Goat Doe Show - Barn 7 (Start 15 minutes after Goat Showmanship)

8:00 p.m.

Special Dairy Classes - Judging Arena

Arrival of Open Show dairy & meat goats

### Saturday, October 17, 2009 (4-H DAY)

8:30 a.m.

Junior Dairy Cattle Show - Judging Arena

(Showmanship followed by the Purebred Show and Commercial Dairy Heifer Show)

9:00 a.m.

Horse & Mule Pull Weigh-In - Barn 11

9:00 a.m.

MGA Open Dairy Goat Show - Barn 8

9:00 a.m.

Junior Market Goat Show - Barn 7; released after showing

9:00 a.m.

MGA Youth Breeding Doe Show to follow Junior Market Goat Show - Barn 7

12:00 Noon

Horse & Mule Pull - Equine Center

4:00 p.m.

Release all dairy cattle

### Sunday, October 18, 2009

9:00 a.m.

MGA Open Dairy Goat Show - Barn 8; released after showing

\*\* Note that the Goat Judging Contest and Goat Quiz Bowl will not be offered at the 2009 Mississippi State Fair. Goats will be added to the Senior Livestock Judging Contest and market and dairy goat questions are included in the Livestock Bowl Contest held at 4-H Congress. Junior goat exhibitors will have the opportunity to judge goats at their District Livestock Show.