

Gardening Tips

INSIDE THIS ISSUE:

EVENTS	2
GARDEN CALENDAR	3
TURF TIPS	4
ARBOR DAY TREE SALES	4



SPECIAL POINTS OF INTEREST:

If you have comments about the Extension Express or suggestions for future items, please contact:

Eddie M. L. Smith
County Director

MSU-ES Hancock County
Phone: 228-467-5456

MSU-ES Pearl River County
Phone: 601-403-2280

E-mail
emlsmith@ext.msstate.edu

Mississippi State University, United States
Department of Agriculture, Counties Cooperating
Mississippi State University does not discriminate on the basis of race, color, religion, national origin, sex, age, disability, or veteran status.

Cabbage, broccoli, cauliflower, and other cool season vegetable transplants can be planted right now. Check for availability at your garden centers and farmer's co-ops this month. Early-bird gardeners try to get their cabbage, collard, and broccoli plants out as soon as possible. English peas, spinach, head lettuce, beets, radishes, and mustard can be seeded late in February. Sometimes they make it, and sometimes they don't. It all depends on our capricious early spring weather that can be typified by a 40-degree drop in temperature in just a few hours.



Irish potatoes and onion sets or transplants can be put in the ground now. When planting seed potatoes be sure that each chunk of potato you cut from the seed potato has a least one eye or bud from which the stem of the plant will grow. For you novice gardeners, the eye should be looking up when planted so the potato can see which way to go! Remember the book entitled Don't Bend over in the Garden Granny, You Know Them Taters Got Eyes by Southern humorist Lewis Grizzard? Think about that the next time you're bent over digging taters!

One limiting factor for early spring planting other than our yo-yo weather is when the soil will be dry enough to till. One way to get around this is to grow your cool season vegetables in raised beds. These beds will be workable and ready to plant before beds prepared at existing ground level.



Upcoming Events

February 2011	
3	Pearl River County Master Gardeners Meeting — 12:30 p.m. Crosby Arboretum. Picayune, MS.
4	Winter Botany Field Walk — 10:00 a.m. to 12:00 noon (Family). Crosby Arboretum. Take a walk through the Arboretum grounds with Dr. Glenn Hughes, Mississippi State Extension Forestry Professor, and learn how to identify plants in winter. Call 601-799-2311 for more information.
4	Ecology of the Piney Woods — 1:00 to 3:00 p.m. (Adults). Crosby Arboretum. Join Tate Thriffiley, with the USDA Forest Service for a talk about ecology, sustainable forestry, and restoration activities in De Soto National Forest, human migrations over the last 130,000 years and what this means to us now in south Mississippi. After an indoor presentation, Tate will lead a short walk on the grounds and will discuss the ecology and relationships at the Arboretum.
8	Hancock County Master Gardeners Meeting — 1:30 p.m. Hancock County Extension Service, Building 23.
9	Private Pesticide Application Training Class — 9:00 a.m. to 12:00 noon. Pearl River County Extension Service. \$10.00 fee for the training (Check or money orders only). Call to register at 601-403-2280.
10	Gardening Program for the Poplarville Garden Club — 2:00 p.m. Poplarville First United Methodist Church. Guests are welcome. Please Call Gloria Joubert to RSVP for the meeting at 601-795-6089. Dr. Gary Bachman will be the speaker. Dr. Bachman is the weekly host of "Southern Gardening" on WLOX, daily commentator on Mississippi Public Radio, and weekly columnist for the Sun Herald. Dr. Bachman and his wife, Katie, operate the Heritage Cottage Urban Nano Farm. For more information please call: Ginger Holtson, President, Poplarville Garden Club, 601-795-6545.
10	Mississippi Arbor Day Celebration: Planting the Gum Pond exhibit — 1:00 to 3:00 p.m. Crosby Arboretum. Area organizations and individuals are invited to celebrate Mississippi Arbor Day by planting a tree at the Crosby Arboretum's new Gum Pond! Free admission, but if possible, please call to register 601-799-2311.
16	'Just like grandma's....heirloom vegetables for year garden' — growing heirloom vegetables in your garden— 12:00 to 1:00 p.m. Hancock County Extension Service (228-467-5456) or Pearl River County Extension Service (601-403-2280). Presented by Dr. Wayne Porter via Interactive Video. Call to register.
16	Pearl River County Cattlemen's Association Meeting — 6:00 p.m. Pearl River Community College cafeteria. Call the Pearl River County Extension office to RSVP for the meeting 601-403-2280. A Steak Dinner will be provided. \$10.00 for adults and children 12 and up that are not in 4-H.
19	Basic Gardening Program for the Friends of the Library — 2:00 p.m. Crosby Library. Picayune, MS.
25	"Nest in Peace" (Kids!) — 10:00 to 11:00 a.m. Crosby Arboretum. Spring is approaching and our feathered friends are gathering materials for nest building. Take a closer look at bird nests, then shape a nest from yarn and add a baby bird molded from clay with Master Naturalist Mary Cordray. Children must be accompanied by a parent or guardian. Call 601-799-2311 for more information.

Master Gardener Hotline

Got Gardening Questions? The Master Gardener Hotline for Hancock County has the answers! The Hancock County Master Gardener Hotline will be available every Thursday from 9:00 a.m. to 3:00 p.m. A Master Gardener will take your call and research your problem to find a solution. Written material can also be sent to your home about most gardening problems. The Master Gardener Hotline number is (228)-467-5456.

Planting

- Plant new roses before March 15.
- Broad-leaved Evergreens such as Magnolia and Holly can be set out at this time.
- Plant cold weather annuals Sweet William, English Daisies, Pansies, and Calendulas.
- Divide Mondo Grass and Liriope. Divide Cannas, Chrysanthemums, Coreopsis, Phlox, and Obedient Plant.
- Start seeds for Tomatoes, Bell Peppers, and Eggplant. Set out Thyme, Lemon Balm, Oregano, Chives, Sage, and Winter Savory.
- Sow seeds of Johnny Jump-ups, Sweet Peas, Larkspur, Forget-Me-Nots, and Baby Blue Eyes.
- Flowering shrubs may be moved at this time. Larger shrubs should be moved with a ball of dirt and smaller shrubs may be moved bare-rooted.
- This is the best month to move Crape Myrtles.
- Lawns may be sodded at this time. Plant Gladiolus throughout this month for continuous bloom. Plant Hostas.
- Caladiums can be started in outdoor containers as soon as weather warms.



Fertilizing

- Fertilize all the garden except acid-loving plants.
- Topdress Camellias with azalea-camellia fertilizer.
- Lime Peonies, Clematis, and Boxwoods.



Pest Control

- Spray new rose leaves for black spot weekly.

Pruning

- Prune roses at this time. Remove dead and weak canes. Properly dispose of clippings.
- Prune Crape Myrtles and Altheas.
- Prune evergreens for shape and size as early in the month as possible.
- Cut English Ivy back very hard. It will come back very nicely in the spring.
- Trim Mondo Grass and Liriope with lawn mower set on highest setting (6 inches). Dispose of trimmings.



Mulch

- Replenish mulch around Azaleas and Camellias.

Miscellaneous

- Dispose of fallen Camellias blossoms to prevent blight.
- Rake up seed hulls from under bird feeders. They will smother new growth.
- Remove dead flowers from tulips and daffodils. Do not cut foliage before it turns yellow and dies.

Home Accent

Divide or repot overgrown houseplants. Cut back weak parts to encourage new growth. Apply fertilizer every 2 weeks or so.

In Bloom

Bluebells, Chionodoxa, Daffodil, Hyacinth, early Iris, Pansies, Violet, Carolina Jasmine, Azaleas and Camellias, Forsythia, Pearl Bush, Photinia, Flowering Quince, Spirea, flowering fruit trees (Crabapple, Cherry, Pear, and Peach), Oriental Magnolia, and Redbud.

We are now on Facebook!

MSU Hancock and Pearl River County Extension Service

Like our page to keep up with upcoming programs.



Most Mississippians have enjoyed rather mild temperatures through the holidays. Harsher weather is likely over the next couple of months, however.

What will these temperature changes do to our lawns and other managed turf areas? To this point I am optimistic that the turf has or will have a good chance of going dormant before extremely severe temperatures do much permanent damage. Surely some above ground plant tissue will be lost, but roots and rhizomes or stolons will remain alive and healthy.



The danger of winter kill is most critical later in early spring after we get a nice warming trend for a couple of weeks. The turf breaks dormancy and begins to green-up and is followed by some severe low temperatures.

I would focus my attentions now more on plans to eliminate poor drainage areas, new landscaping, collecting soil samples for analysis, etc. and think about the benefits this cold may bring in regards to insect, disease, and weed control. If you do experience times of frozen turf it would be best to avoid any excessive traffic on it until the turf thaws.

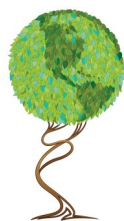
Hancock Soil & Water Conservation District

Arbor Day Tree Sale

Feb. 10, 2012 at the Kiln Field Office

First come first served. So come early.

From 8:00 a.m.– 4:00 p.m. or until all trees are sold...



Pearl River Soil & Water Conservation District

Arbor Day Tree Sale

Feb. 10, 2012 at the Poplarville Field Office

First come first served. So come early.

From 9:00 a.m.– 3:00 p.m. A limited number of River Birch & Cherry Bark Oak trees will be free.

ARBOR DAY PLANT SALE

Saturday, February 11

Members' Only Sale – 9:00 to 10:00 a.m.

General Public – 10:00 a.m. to 3:00 p.m.

Winter is a good time to plant trees and woody shrubs. Choose from a variety of trees and shrubs at this plant sale, and come early for the best selection of hard-to-find native plants. We'll help you select the right plant for the right place!

Free admission. Crosby Arboretum Greenhouse.

